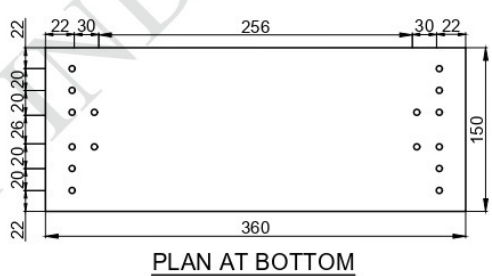
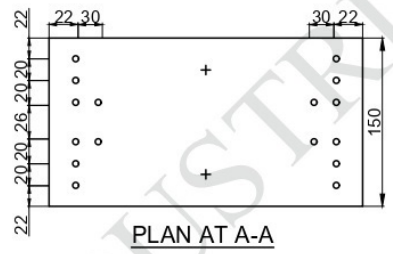
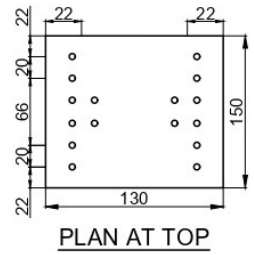
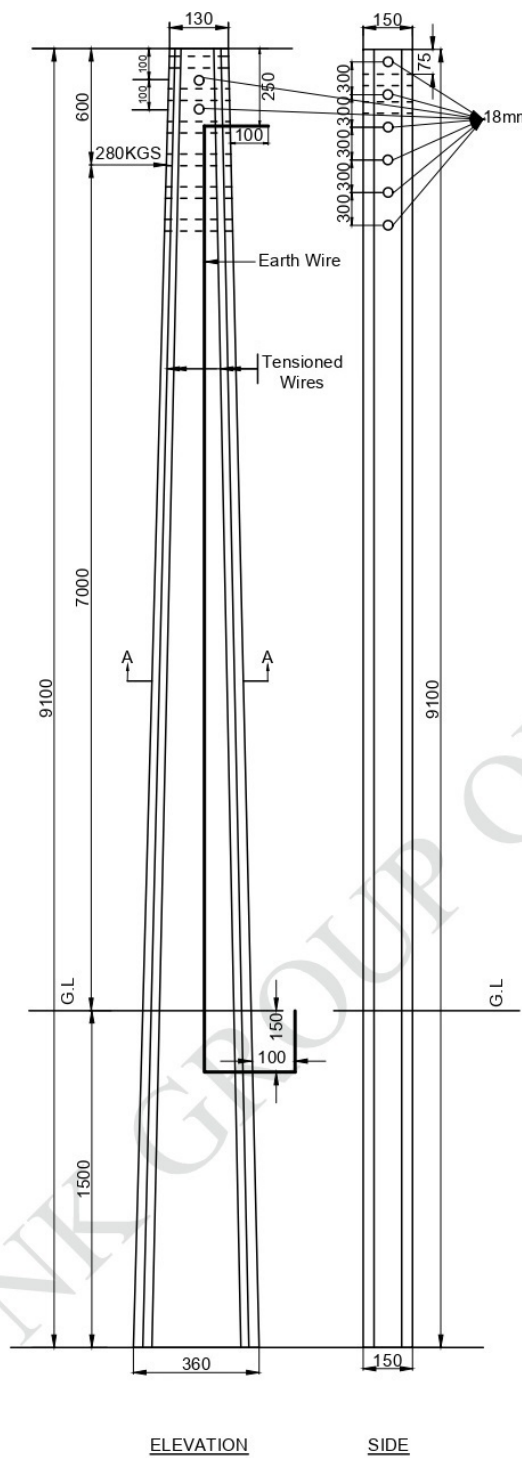




REINFORCEMENT DETAILS OF 9.1M/280KG

PRESTRESSED CEMENT CONCRETE POLES (FACTOR OF SAFETY = 2.0)



- O Denotes Tensioned Wire
- + Possible Position of Earth Wire

TECHNICAL GUARANTEE PARTICULARS 9.1M/280kg WORKING LOAD

SECTION:	A) TOP	: 130 X 150 mm
	B) BOTTOM	: 360 X 150 mm
QUANTITY OF CONCRETE		: 0.334 m ³
CONCRETE GRADE		: M-40
OVERALL LENGTH SUPPORT		: 9.1 M
PLANTING DEPTH		: 1.5 M
DIAMETER OF PRESTRESSING WIRE		: 4 mm
NUMBER TENSIONED WIRE		: 16 Nos
MINIMUM CUBE STRENGTH OF CONCRETE AT 28 DAYS		: 400 Kg/cm ²
CLEAR COVER		: 20 mm
FACTORY OF SAFETY		: 2.0
WORKING LOAD		: 280 kg
ULTIMATE LOAD		: 560 kg
WEIGHT OF POLE (THEORETICAL)		: 870 kg
LOAD APPLICATION AT A POINT FROM THE TOP		: 600 mm
ULTIMATE TENSION STRENGTH FOR 4MM WIRE		: 17500 kg/cm ²
G.I. EARTH WIRE 8SWG		: 1 no
ALL DIMENSIONS ARE IN mm		NOT TO SCALE