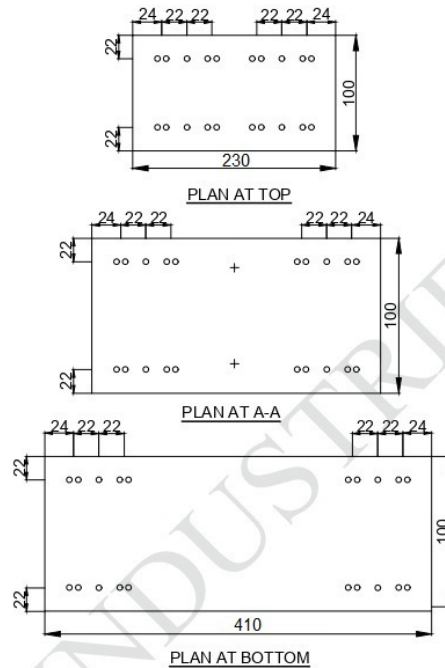
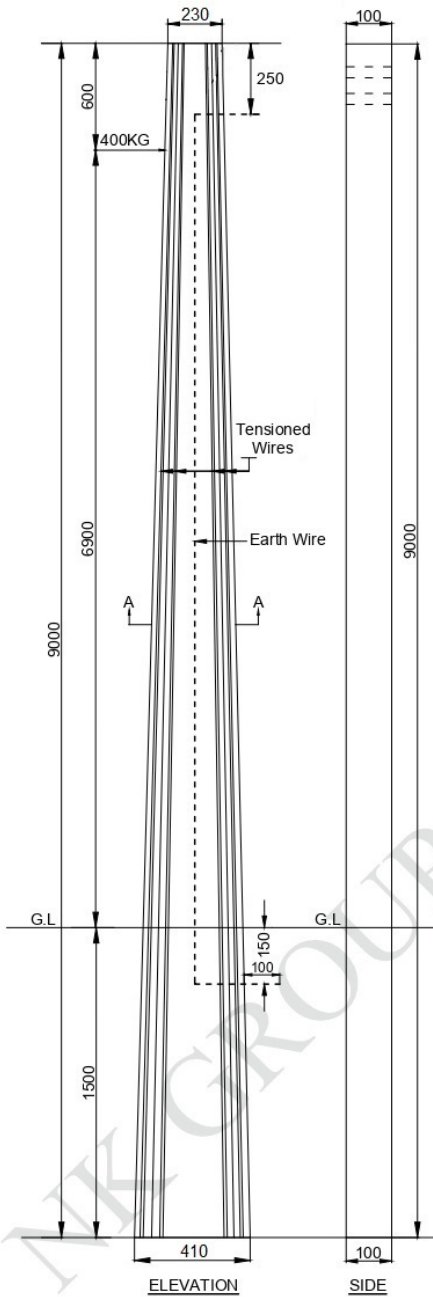




## REINFORCEMENT DETAILS OF 9.0/400KG PRESTRESSED CEMENT CONCRETE POLES (FACTOR OF SAFETY = 2.0)



Location of holes as per REC Standards  
 O Denotes Tensioned Wire  
 + Possible Position of Earth Wire

### TECHNICAL GUARANTEE PARTICULARS 9.0mtr/400kg WORKING LOAD

TYPE OF POLE	:FLAT
SECTION: A) TOP	: 230 x 100 mm
B) BOTTOM	: 410 x 100 mm
QUANTITY OF CONCRETE	: 0.288 m <sup>3</sup>
CONCRETE GRADE	: M-42
OVERALL LENGTH SUPPORT	: 9.0 m
PLANTING DEPTH	: 1.5 m
DIAMETER OF PRE-STRESSING WIRE	: 4 mm
DIAMETER OF G.I. WIRE	: 4 mm
NUMBER TENSIONED WIRES	: 20 no's
CLEAR COVER	: 20 mm
FACTORY OF SAFETY	: 2.0
WORKING LOAD	: 400 kg
ULTIMATE LOAD	: 800 kg
WEIGHT OF POLE (THEORETICAL)	: 708 kg
LOAD APPLICATION AT A POINT FROM THE TOP	: 600 mm
ULTIMATE TENSION STRENGTH FOR 4MM WIRE	: 17150 kg/cm <sup>2</sup>
LIVE VOLTAGE	: 33KV-HT & LT Lines
GI EARTH WIRE 8SWG	: 1 no
All dimensions are in mm.	<b>NOT TO SCALE</b>